

EZ Radiance Pools

Pools

Assembly

Instructions

Warnings

- Manufacturer is not responsible for any damage or injury resulting from errors or omissions in this manual. If you have any questions call for technical support. We will be happy to assist you.
- Always install the warning decals and signs. They are designed to remind you and your guest of the possible dangers associated with pool use and shallow water. Failure to follow safety warnings can lead to severe personal injury or death.
- Risk of accidental drowning: extreme caution must be exercised to prevent unauthorized access by children or non-swimmers. To avoid accidents, ensure that children or non-swimmers cannot use this product unless they are supervised at all times.
- Risk of accidental drowning: the use of alcoholic beverages, drugs, or medication before or during pool use may lead to unconsciousness and the possibility of drowning or health complications.
- Risk of accidental electric shock: do not permit any electric appliance (such as a light, telephone, radio, television, etc.) within 5 feet (1.5 meters) of the pool. All electrical items anywhere in the vicinity of the pool must be on an approved G.F.C.I..
- All bolts, nuts, and screws must be installed and securely tightened! All bracing must be installed correctly and in the proper locations. Failure to do so will result in pool failure and cause serious personal injury or death as well as significant property damage.
- Your pool must be level. A pool that is not level may cause excessive stress on the pool walls. This may result in pool wall failure which could cause serious personal injury.
- All pool walls must be placed on undisturbed soil. Failure to do so will result in pool failure and cause serious personal injury or death as well as significant property damage. Manufacturer accepts no responsibility for damages or injuries incurred as a result of improper installation.
- When assembling your pool, keep parts not currently in use in an area out of the way. Disassembled parts are easily tripped over and may be damaged or cause personal injury.
- Do not attempt to lift heavy boxes by yourself. To reduce the possibility of personal injury, have someone help you move heavy boxes (such as pump, filter, liner, etc.).
- Be sure to have a licensed electrician perform any hook-ups for your pool. Failure to follow the manufacturer's instructions, B.O.C.A., N.E.C., and local building codes will not only void the warranties, but will also put the lives of you or anyone else using the pool at risk.
- Secure your pool when not in use. All means of accessing the pool should be secured to reduce the possibility of unauthorized entry and possible serious accidents.
- Check to see if building permits or utility clearances are required. Comply with local, state, and federal building codes and safety codes regarding barriers, all electrical codes, or any other codes.
- The use of main drains can cause an extreme risk of entrapment, serious injury, and death. If you install one, install it in such a way that it can never be used as the only suction line coming from the pool and thus have the full suction power of the pump working through it. Even installed in this way, there is still a grave risk of entrapment, serious injury, and death. Drains must meet all local, state, and federal codes.
- Metal parts have sharp edges. Always wear gloves to protect against cuts, scrapes, splinters, abrasions, and other possible injuries.
- If you somehow get a leak in your pool, you must deal with it right away. Allowing a leak to continue in any pool or spa will cause deterioration of the pool or spa structure leading to structural failure. This is considered failure to properly maintain your pool and is not covered under any warranty.
- Installing this or any product, regardless of wall type (polymer, fiberglass, steel, aluminum, stainless steel, concrete, etc.) in corrosive soil or other harsh conditions can lead to product deterioration and/or failure. If you are uncertain consult a local soil and/or corrosive engineer for recommendations on proper protective measures.
- If this pool is being installed in an area with a high water table or where water may accumulate, a french drain or other means of relocating the ground water must be provided.
- Chlorine generators (also called salt systems) are corrosive to pool walls of all types. A properly installed zinc anode, proper electrical bonding and grounding, and properly balanced pool water can help reduce this effect. While no warranty covers corrosion and there is no guarantee that the steps listed above will prevent this corrosion. Medallion is merely providing this information as a service to the purchaser.
- All measurements are approximate and drawings are not to scale.

These instructions are an addendum to the **EZ Radiance** Inground Pool Installation Manual. For information regarding pool layout, digging, vermiculite, liner installation, plumbing, etc. please refer to that manual. The information provided here is specific to the **EZ Radiance Pools**. As always if you have any questions please give us a call and we will be happy to assist you.

Here are some specific differences from our standard walls. This is not a complete list. They are discussed further in the appropriate sections of these instructions:

- The holes in the braces are not for plumbing - the concrete bond beam must flow through them.
- When installing side mount coping, longer tek screws (1-3/4") must be used.
- Screws used to install coping must be no more than 6" apart.
- Braces are installed on both ends of every panel, even in corners.
- Wall fittings for use as returns or to install lights must be longer (at least 2-3/4").
- The depth or thickness of the concrete bond beam must be at least eight inches (8").
- When bolting internal walls (such as for stairs, sunledges, benches, etc.) to the external walls 3/8" bolts 2-3/4" long must be used.
- When bolting in plastic stairs special adapter walls and braces must be used.

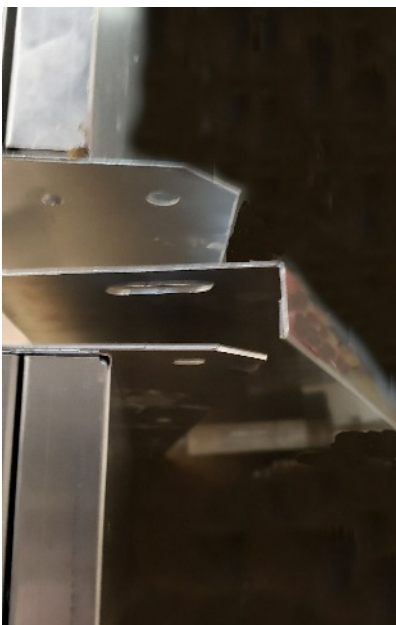
Wall Assembly

- Walls are bolted together using 3/8" bolts.
- Braces are located at both ends of every panel and are placed between the walls (see pictures below).
- Braces are placed in every corner between the outside corner filler and the wall (see picture below)
- Slots in the braces where they bolt to the walls allow for wall adjustment.
- Drive stakes are driven into the ground at the back of each brace and bolted to it using another 3/8" bolt. (See picture below)
- Make sure all walls are straight, plumb, and that everything is square.
- If you have any internal stair, bench, sunledge, or other additional structures make sure these are installed now according to their individual instructions.

Two walls with brace between shown after bolting together



Two walls with brace between shown before bolting together



Back of brace shown with drive stake installed



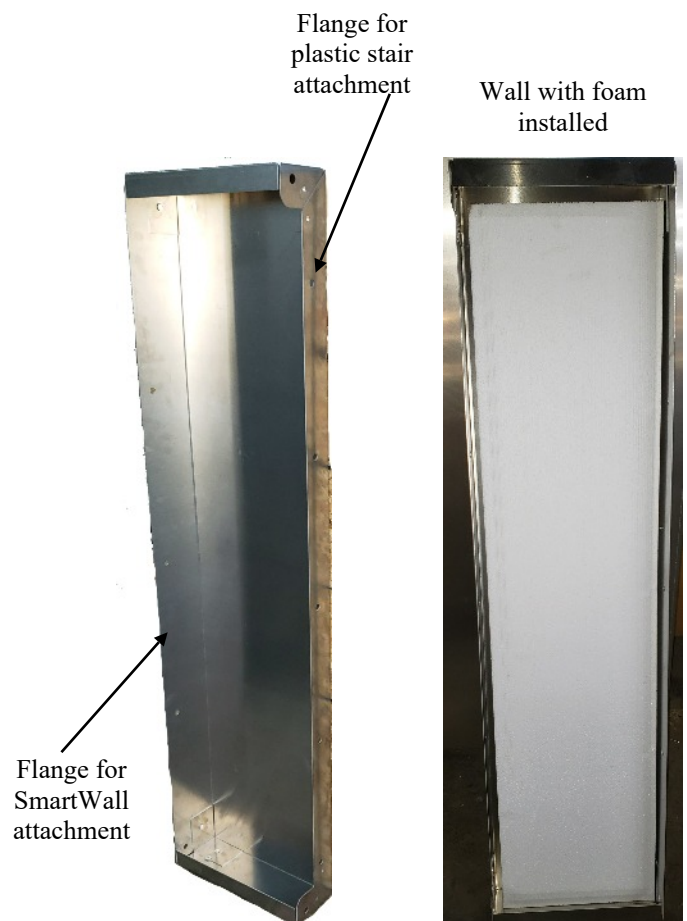
Corner shown with outside corner filler and two braces installed



Plastic Stair Installation

- If you are installing a plastic stair special walls and braces are required.
- These special walls bolt to the **EZ Radiance** on one side and to the stair on the other.
- There is a left and a right wall.
- Set these walls flush with the front of the stair and set the stair height based on the type of stair and the height of your deck (see the Medallion Inground Pool Installation Manual for more information)
- Clamp the walls to the stairs and drill holes in the stair flange to match the wall.
- Install the special braces between the stair and the wall and bolt them all together.
- Drive stakes are also required on these braces.
- The EPS foam for these walls must be installed on the jobsite.
- Once the walls are in place use spray adhesive to attach the foam to the back of the wall.

A pair of special walls for plastic stair attachment.



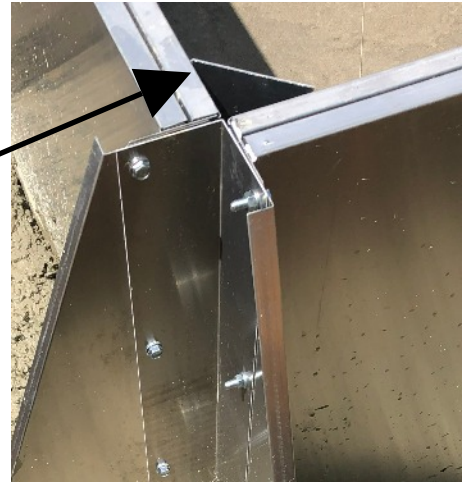
Concrete Bond Beam

- It is extremely important to double and triple check everything before proceeding with this phase of the construction. If any part of the assembly is not right, you will probably not be able to fix it after pouring the bond beam. This phase locks everything you have done up to now in concrete. Do not say to yourself “I think that’s right” ... **make sure it is right.**
- Before pouring, be sure to fill in any voids you may have that would allow concrete to go under the walls and into the interior of the pool. If this happens, it will be difficult to remove.
- The bond beam must be one solid pour of a 2500 lb. mix from a cement truck. **DO NOT ATTEMPT TO MIX BY HAND!** The bond beam must be an absolute minimum of 8” thick, completely surround the pool, and cover the base of every wall, the entire length of every brace, the top of every drive stake, and around every leg of every stair
- The bond beam must flow through the holes in every brace and completely cover these holes.
DO NOT INSTALL PLUMBING THROUGH THESE HOLES.
- Be careful when pouring not to move the walls. Set the chute against the back of the dig and let it flow around the pool.



Duct Tape All Seams

- Use duct tape to cover all seams between panels and between panels and stairs.
- If you have 6" radius corners use duct tape to install the Inside Corner Fillers (see picture to the right)



Install Vermiculite Pool Base

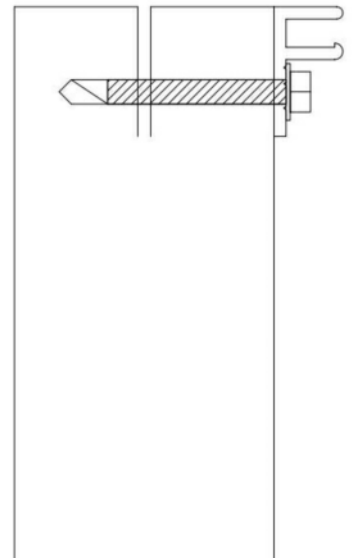
Install the vermiculite pool base. See the Medallion Inground Pool Installation Manual for instructions.

Install Coping

Coping installation on the EZ Radiance Pool is very similar to Pools and More other pool walls with the following exceptions:

- Screws must be installed near the end of each coping section or corner and then no more than 6" apart.
- Receptor and top mount coping use standard length coping screws and are attached to the top of the wall.
- Side mount coping or any other coping that attaches to the face of the wall must use a 1-3/4" long tek screw and pass through the three layers of metal as shown in the picture on the right.

See the Medallion Inground Pool Installation Manual for more information regarding standard coping installation.



Skimmers, Wallfittings, Lights, and Plumbing

- Skimmer installation uses the through wall method. A larger hole has been cut in the back of the skimmer wall to allow the skimmer to reach the front of the wall.
- Once the skimmer is mounted spray foam insulation can be used to fill in around the skimmer.
- All wall fittings must be at least 2-3/4" long for use on the SmartWall. An example is the #400-7390 wall fitting from Waterway Plastics.
- To install these fittings you simply use a 3" hole saw to drill through the wall in the appropriate location, insert the fitting and tighten the locking ring.
- Lights for the SmartWall are limited to the nicheless lights that are installed in wall fittings.
- For more information on plumbing please see the Medallion Inground Pool Installation Manual.

Back of SmartWall skimmer wall



Install Vinyl Liner

Install the vinyl pool liner. See the Medallion Inground Pool Installation Manual for instructions.

Backfill And Grading

Backfilling of the pool must begin when the water has filled the deep end and starts filling the shallow end. Follow the items below and you will be successful when backfilling and grading your pool.

- Never dump backfill material against the walls, steps, skimmer and/or plumbing with a machine - move it against these items by hand only.
- If backfilling with any material other than #57 stone, the level of the backfill and the water in the pool must remain within 6" of each other.
- If backfilling with #57 stone and you are completely backfilling prior to filling the pool with water contact your Medallion representative for special instructions on this process.
- Never drive any machines within five feet (5') of the pool - damage to the walls, steps, skimmer, and/or plumbing may result.
- Make sure that the drainage runs away from the pool at all times.
- Do not compact the backfill material around the pool with any type of machine (hand or power). Allow backfill material to settle naturally or with a light spray of water a little at a time.
- Never drive over any buried plumbing lines.

WARNING: Failure to follow the above guidelines can result in damage to the pool structure. Such damage includes (but is not limited to) bowed walls, verticals ripped from walls, broken or ripped clinches, broken or ripped out rivets, broken welds, broken or ripped out tek screws, damaged walls, damaged or broken braces, damaged or broken coping, damaged liner, etc. None of the above is covered under any manufacturer's warranty.

Thank you for your purchase.

**If you have any questions regarding installation please be sure to give us a call.
We will be glad to assist you.**